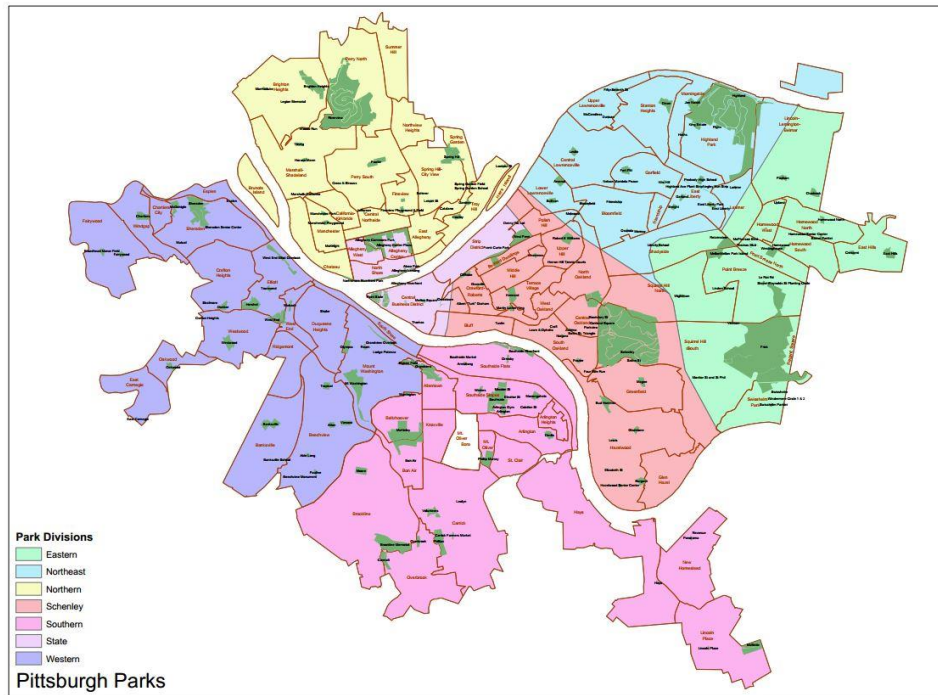




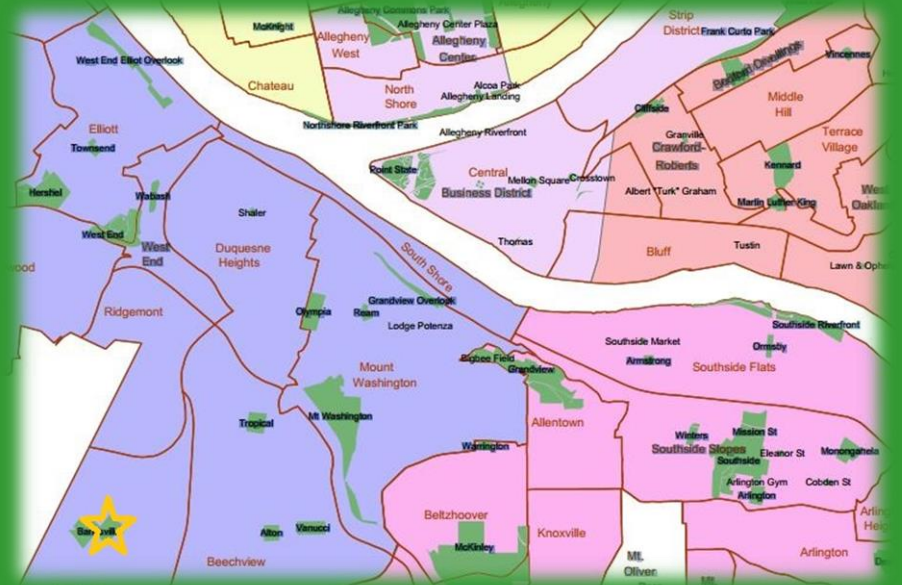
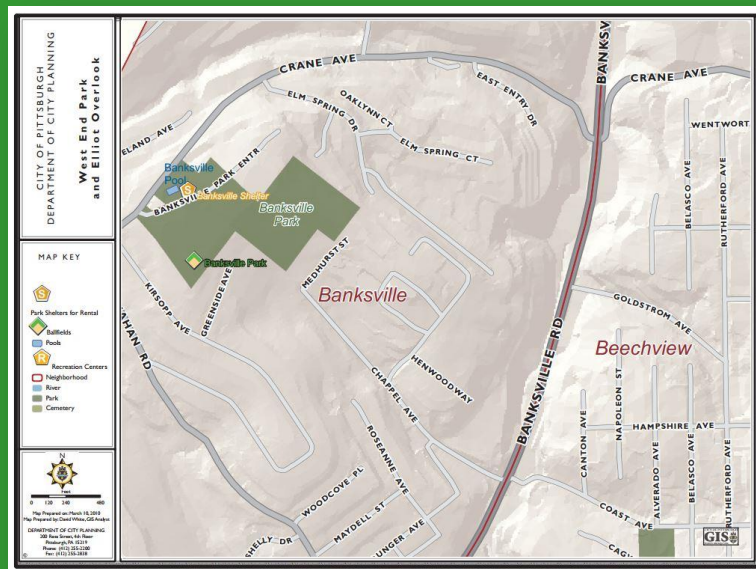
# Neighborhood Parks Shelter Guide





## **Banksville Park**

- ❖ \$225.00 / \$150.00 (without alcohol)
- ❖ Indoor heated facility/ Portable toilets/ Equipped kitchen/ Access to playground and ball field.
- ❖ Capacity: 70 people
- ❖ Location: Crane Ave. and Carnahan Rd.
- ❖ Open: Year round



Please Note: playgrounds, swimming pools, fields, etc. are not exclusively reserved for the permit holder unless indicated otherwise.





## **Brighton Heights Park**

- ❖ \$150.00 / \$75.00 (without alcohol)
- ❖ Open-air shelter/ Portable toilet(s)/ No electric.
- ❖ Capacity: 24 people
- ❖ Location: Brighton Woods Rd. & Weltz Way
- ❖ Open: May thru September
- ❖ Only available weekdays from 1PM-9PM June 8<sup>th</sup>-August 31<sup>st</sup>.



Please Note: playgrounds, swimming pools, fields, etc. are not exclusively reserved for the permit holder unless indicated otherwise.



### **Brookline Park**

- ❖ \$150.00 / \$75.00 (without alcohol)
- ❖ Open-air shelter/ Portable toilet(s)/ Outdoor grill/ No electric/ Playground and fields available.
- ❖ Capacity: 24 people
- ❖ Location: 1400 Brookline Blvd.
- ❖ Open: May thru September



Please Note: playgrounds, swimming pools, fields, etc. are not exclusively reserved for the permit holder unless indicated otherwise.



## **Chartiers Park**

- ❖ \$115.00 / \$40.00 (without alcohol)
- ❖ Open-air shelter/ Portable Toilet(s)/ Access to fields.
- ❖ Capacity: 10 people
- ❖ Location: Chartiers Ave and Eyre Way
- ❖ Open: May thru September



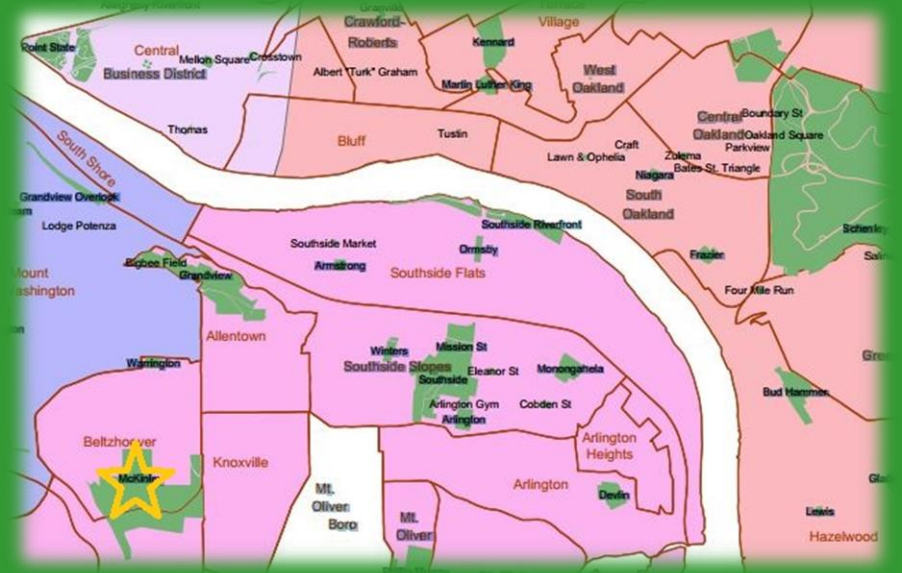
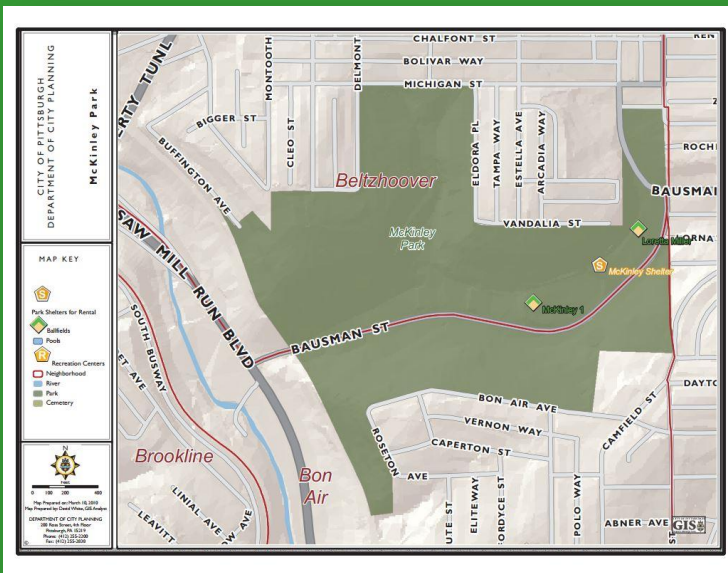
Please Note: playgrounds, swimming pools, fields, etc. are not exclusively reserved for the permit holder unless indicated otherwise.





## McKinley Park

- ❖ \$150.00 / \$75.00 (without alcohol)
- ❖ Open-air shelter/ Portable toilet(s)/ Outdoor grill/ No electric/ Access to playground, ball field, tennis, and hockey courts available.
- ❖ Capacity: 24 people
- ❖ Location: Bausman St.
- ❖ Open: May thru September

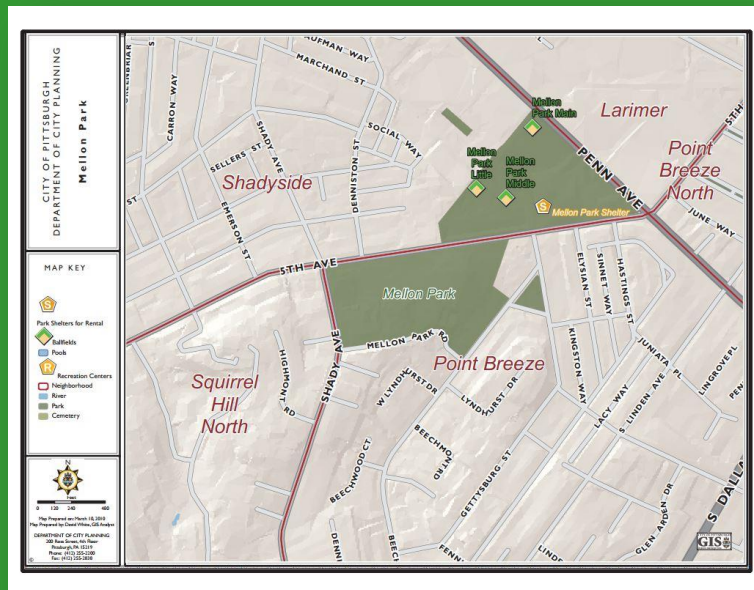


Please Note: playgrounds, swimming pools, fields, etc. are not exclusively reserved for the permit holder unless indicated otherwise.



## **Mellon Park Shelter**

- ❖ \$150.00 / \$75.00 (without alcohol)
- ❖ Open-air shelter/ Portable toilet(s)/ Outdoor grill/ Access to playground, fields, and tennis and basketball courts.
- ❖ Capacity: 24 people
- ❖ Location: Fifth Avenue at Beechwood Blvd.
- ❖ Open: May thru September
- ❖ Only available weekdays from 1PM-9PM June 8<sup>th</sup>-August 31<sup>st</sup>.



Please Note: playgrounds, swimming pools, fields, etc. are not exclusively reserved for the permit holder unless indicated otherwise.





- 
- This map shows the Sheraden Park area in Pittsburgh. The park is a large green space in the center. To its north is the Esplanade, a red line representing a river or canal. To the west is the McGonigle Playground. The map includes a legend with symbols for Park Shelters for Rental, Ballfields, Pools, Recreation Centers, Neighborhoods, River, Park, and Cemetery. A scale bar indicates distances up to 400 feet. The map is titled 'CITY OF PITTSBURGH DEPARTMENT OF CITY PLANNING' and 'Sheraden Park'.

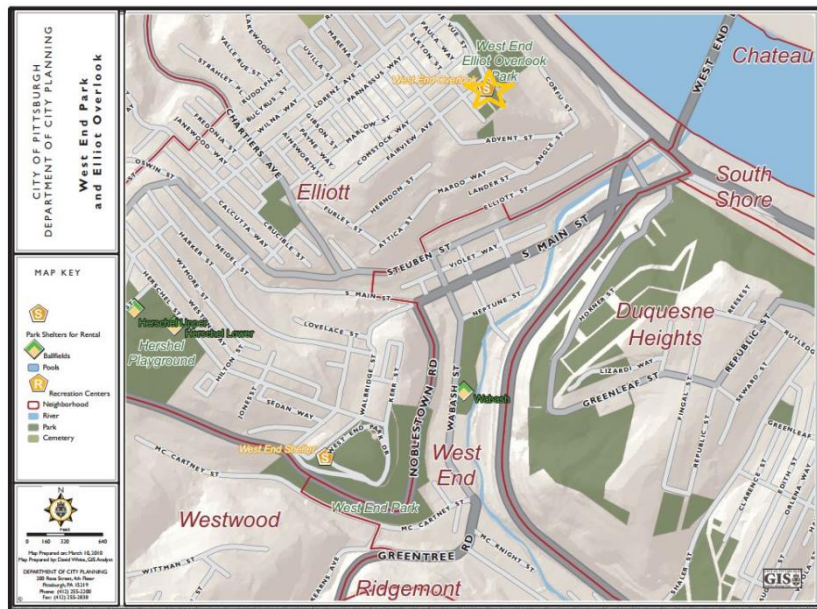






## **West End-Elliott Overlook**

- ❖ \$345.00 / \$270.00 (without alcohol)
- ❖ Indoor heated and air conditioned facility/ Restroom facilities/ Refrigerator/ Electrical outlets/ Roof-top deck included.
- ❖ Facility Capacity: 29 people
- ❖ Roof-top deck: 56 people
- ❖ Location: Marlow St.
- ❖ Open: Year round

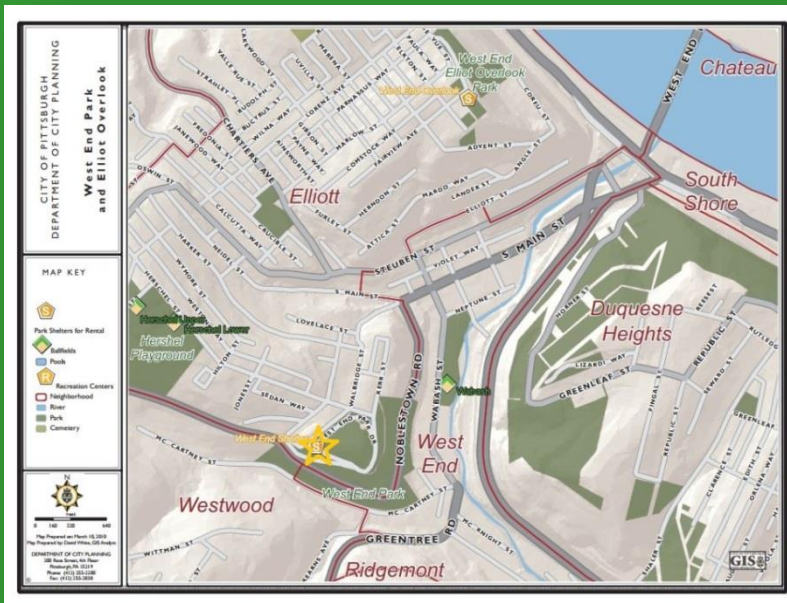


Please Note: playgrounds, swimming pools, fields, etc. are not exclusively reserved for the permit holder unless indicated otherwise.



## **West End Shelter**

- ❖ \$225.00 / \$150.00 (without alcohol)
- ❖ Indoor heated facility/ Restroom facilities/ Equipped kitchen/ Playground available.
- ❖ Capacity: 100 people
- ❖ Location: Walbridge and Herschel St.
- ❖ Open: Year round
- ❖ Only available weekdays from 1PM-9PM June 8<sup>th</sup>-August 31<sup>st</sup>.



Please Note: playgrounds, swimming pools, fields, etc. are not exclusively reserved for the permit holder unless indicated otherwise.